



## COMPANY PROFILE

WE ARE DESIGNING AND PRODUCING LIFTS SINCE 1976

---

[www.wyltor.com](http://www.wyltor.com)

## COMPANY OVERVIEW

FACTS WITH NUMBERS

### Know-How & Track Record

Using cutting-edge technology and highly skilled people, we are innovators of solutions.

With 45 years of experience we have both the competence and confidence of handling any passenger or cargo lifting needs in some of the most complex solutions.

150.000

DOORS SOLD

30.000

CLIENTS

32

COUNTRIES

45

YEARS OF OPERATION

## MISSION

PROVIDE OUR CUSTOMERS WITH EXCEPTIONAL QUALITY, SAFETY, PERFORMANCE AND VALUE FOR MONEY ENGINEERED LIFT SOLUTIONS AND SERVICES TAILORED TO THEIR NEEDS.

### **To provide superior quality**

We make no compromises to our quality,  
by using exclusively leading brands  
as our suppliers

### **High level of Net Promoter Score (NPS)**

We have been achieving constantly  
99.6% customer retention rate

### **Cost-effective**

We offer 100% cost-effective solutions

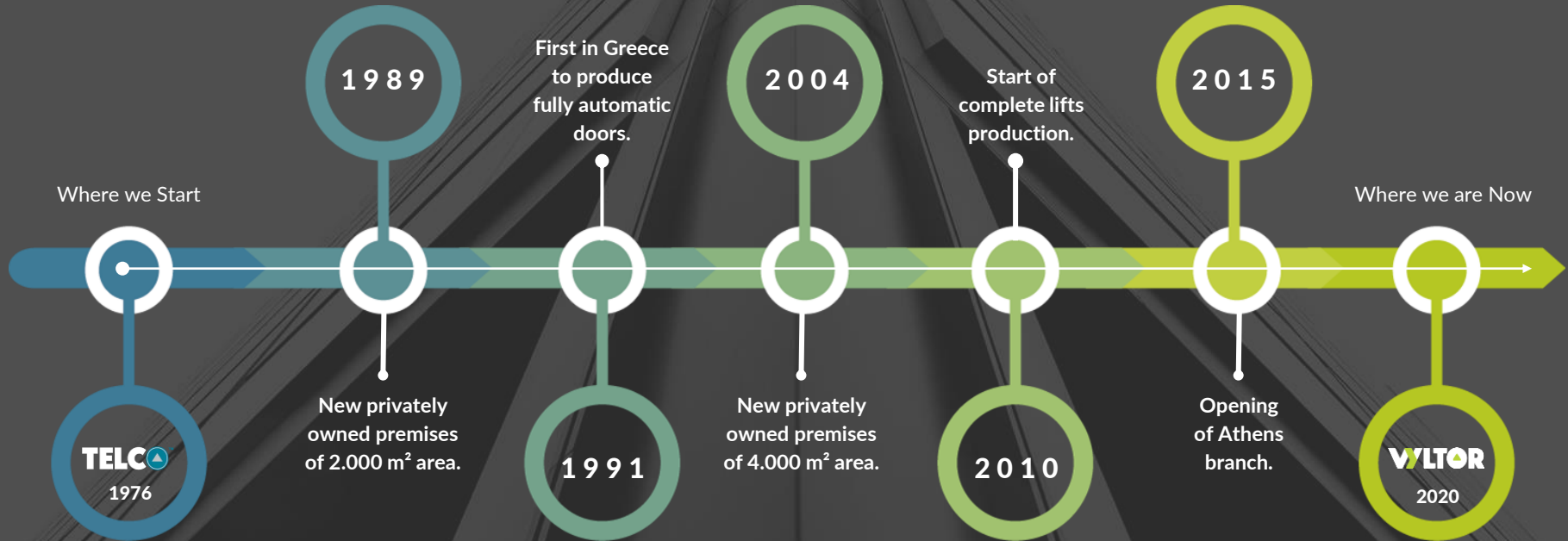
A dark, high-contrast photograph of elevator machinery, showing large metal pulleys and cables. The text "Customized Solutions" is overlaid in a bright yellow-green color.

## Customized Solutions

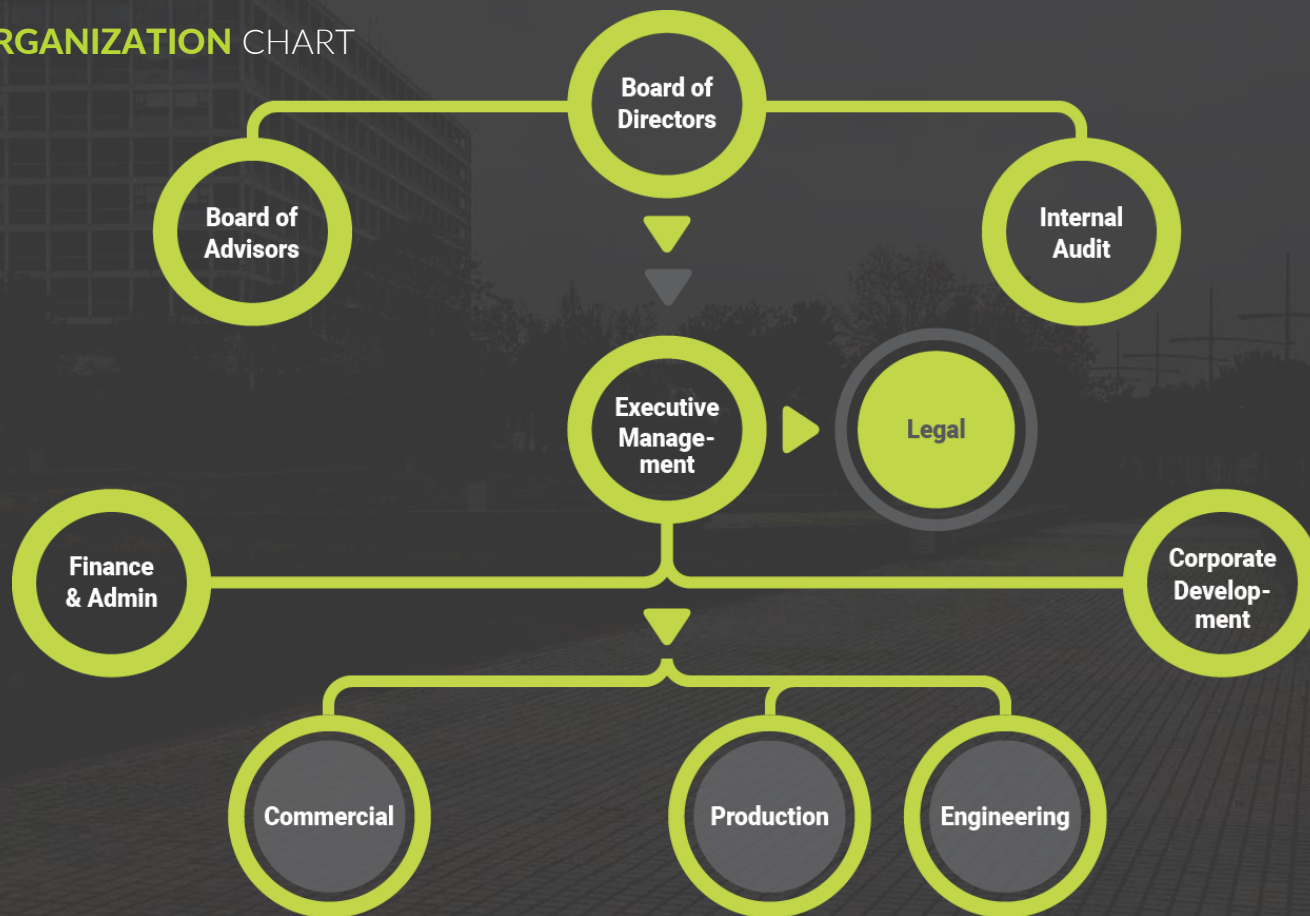
Our 45 years of experience in designing and manufacturing elevators,  
addressing any customer requirements, allows us to offer any customized solution.

# A HISTORY OF GROWTH

45 YEARS OF PRESENCE

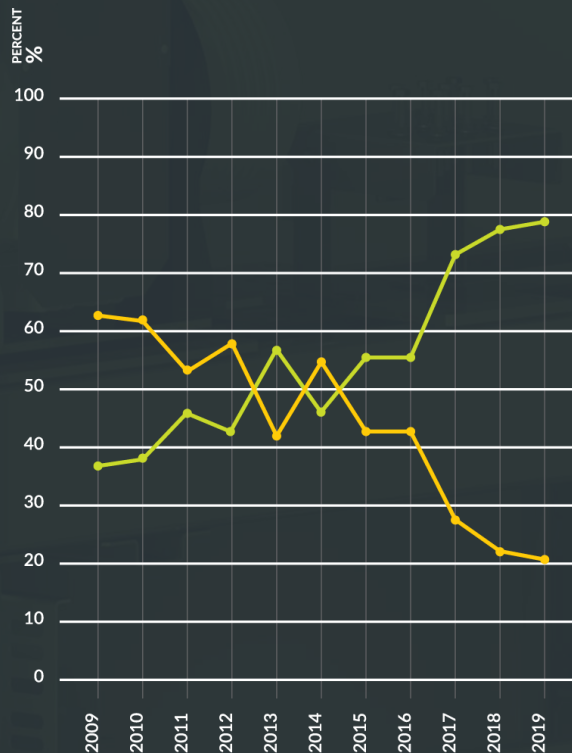


## COMPANY ORGANIZATION CHART



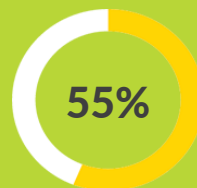
## SALES STATS

FACT LIST

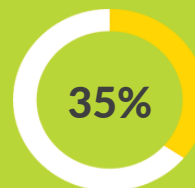


Domestic Sales **vs** Exports %

Exports % Domestic Sales %



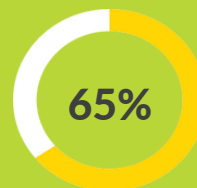
TRACTION  
LIFTS



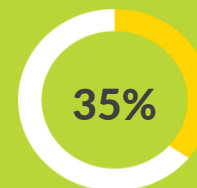
HYDRAULIC  
LIFTS



HOME  
LIFTS



COMPLETE  
LIFTS



COMPONENTS



## PRODUCT CATEGORIES

COVERING ALL YOUR NEEDS

### Our Products

Wyltor designs, produces and provides integrated solutions for traction and hydraulic lifts, with or without machine room. It manufactures passenger, freight and car lifts for residential buildings, offices, hospitals and shopping centres, with absolute reliability, security and consistency.

#### Passenger Lifts

Safe, comfortable and economic solutions, for everyday use in residential buildings.

#### Goods Lifts

Tough and durable lifts, for easy and secure cargo transportation

#### Components

From leading brands, ready to extend the life of your old lift at the minimum cost.

#### Escalators

Smooth operation (VVVF use), low noise level, energy saving, easy maintenance, flexible design, indoor-outdoor installation

#### Home lifts

Convenient and innovative lifts, enhancing accessibility for the disabled or elderly.

#### Car Lifts

Secure and reliable, offering maximum space utilization for car storage.

#### Accessibility

Installed in all stairways provide maximum safety and require minimal space & maintenance.

## OUR PRODUCTS

- Plug and play
- Easy installation with user friendly manuals
- Customized products & solutions
- Eco friendly
- Fast delivery time (4-5 weeks for standard products)
- Leading European partners (Langer & Laumann – GMV MARTINI - Schneider – Gefran – Alberto Sassi – Drako – Dynatech)
- Certifications - fully compatible with European rules manufactured elevators
- TQM (Total Quality Management)
- 5 years warranty (extendable to 7 years)
- 24/7 real time after sales support
- Value for money products & solutions





## Makedonia Palace Hotel

THESSALONIKI GREECE

4 x Passenger Traction MRL Lifts,  
675 kg, 10 stops, tetraplex,  
with destination dispatch function



## Hotel Royal

THESSALONIKI GREECE

Hydraulic Panoramic Lift, 1125 kg, 2 stops



## Κόκκινο σπίτι

THESSALONIKI GREECE

Traction MRL Passenger Lifts, 630 kg, 6 stops





## London, UK

Traction MRL Passenger Lifts, 630 kg, 6 stops



## Holland

Hydraulic Homelift, 300 kg, 2 stops



Various Car Lifts





# Sample of Projects

MODEL	PROJECT	COUNTRY
<b><u>Malls - Commercial Centers</u></b>		
MRL 1600kg 4stops	Cura Vitalis	Germany
HAI 630kg 6stops	Shopping center Travnik	Bosnia
MRL 2000kg 4stops	H&M shopping center	Serbia
2 hydraulic lifts	Commercial building, LUZ Construct	Romania
MRL 1200kg 5 stops	SAF South Hurstville	Australia
MRL 975kg 2 stops	WIN Stadium NSW	Australia
Cargo 2000kg	Showroom for motorcycles	Cyprus
MR 630kg 15stops 2m/s	Tower Lemesos	Cyprus
MRL 1000kg 14stops	Renova Shopping Mall, Tetovo	FYROM
3xMR 630kg 10 stops	Byjaya Centre	Algeria
HADI 3000kg 2 stops	Algerie Centre Automobile	Algeria
MRL 1000kg 7 stops	Central Building	Cameroon
HAI 1000kg 2 stops	Commercial Center Al Medinah	Saudi Arabia
2xHADI 4000kg 3 stops	Kuwait Center	Kuwait
<b><u>Parking Lots</u></b>		
MRL 630kg 5stops	Parking Clémenceau	France
HADI 3500kg 3 stops	Parking Casablanca	Morocco
2 HADI 4000kg 5 stops	Parking Oran	Algeria



# Sample of Projects

MODEL	PROJECT	COUNTRY
<b><u>Offices – Public Buildings</u></b>		
MRL 630kg 3stops	School École Deuxième Chance	France
MRL 630kg 4stops	School Saint Vincent	France
MRL 1600kg 2 stops	Good Samaritan Catholic College NSW	Australia
MRL 1600kg 5stops	Wroclaw DCZP Public building	Poland
MRL 630kg 4stops	Mosque, Rotherham	UK
2 MRLs 630kg 2 stops	APOEL training center	Cyprus
MRL 630kg 5stops	PK Telekom, Miskolc	Hungary
MRL 630kg 3stops	Ablecare Oilfield Services Group	Malta
2xHADI 2000kg 2 stops	University Nouakchout	Mauritania
MRL 1600kg 2 stops	Port of Oran	Algeria
HAI 450 kg 6 stops	Ministère de la Défense	Algeria
HADI 4000kg 2 stops	Airport of Tunis	Tunisia
MRL 1000kg 5 stops	University of Cairo	Egypt
HAI 450kg 2 stops	University Al Medinah	Saudi Arabia
<b><u>Hospitals</u></b>		
MRL 1000kg 4stops	Hospital MEDICOM Zenica	Bosnia
MRL 1600kg 6stops	Hospital, Brasov	Romania
MRL 1600kg 3stops	Limanova Hospital	Poland
MRL 375kg 3stops	PO Tetovo Ekolog, Private Hospital	FYROM
2xMRL 1000kg 6 stops	Clinic Nouakchout	Mauritania
5xMR 1000kg 5 stops	Clinic Tripoli	Libya
2xHADI 4000kg 3 stops	Medical Center	Kuwait



# Sample of Projects

MODEL	PROJECT	COUNTRY
<b><u>Industrial Buildings - Factories</u></b>		
2 Cargo 3000kg	Bakery Zorbas	Cyprus
MRL 900kg 2 stops	Blanc Black Brookvale	Australia
2 Cargo lifts 5000kg	Wesselink	Netherlands
3 Cargo lifts 3000kg	Barneveld	Netherlands
Cargo lift 1500kg	Baby park logistics	Netherlands
Traction 3000kg 9 stops	Zabeel Feed Mill	UAE
HAI 2000kg	Alkaloid Laforma	FYROM
Cargo 2500kg	Alkaloid Laforma	FYROM
HAI 1500kg 4 stops	Factory Tunis	Tunisia
5xHADI 5000kg 2 stops	Factory	Kuwait
2xHADI 2000kg 2 stops	Factory	Kuwait
<b><u>Hotels</u></b>		
4xMRL 675kg, 10 stops	Hotel Makedonia Palace Thessaloniki	Greece
HAI 1125kg Panoramic	Hotel Royal	Greece
HAI 630kg 5stops	Hotel Belgrade	Serbia
HAI 630kg 5stops	Hotel Altina	Montenegro
HAI 450kg Panoramic	Hotel	Montenegro
Modernization 2 MRLs	Panoramica Hotel, Skopje	FYROM
2xMRL 630kg 3 stops	Hotel Nouakchout	Mauritania
3xMRL 630kg 11 stops	Hotel Oran	Algeria
2xMRL 600kg, 9 stops	Hotel Litoral	Venezuela

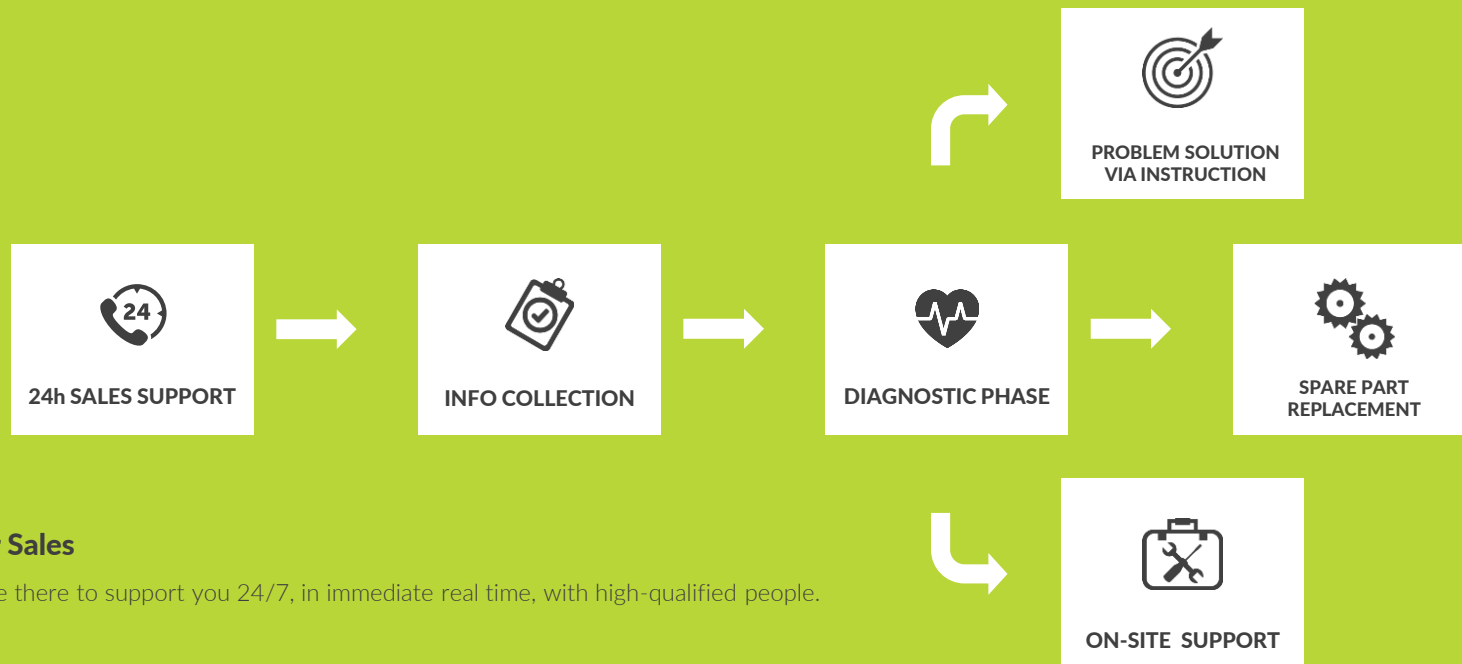


# Sample of Projects

MODEL	PROJECT	COUNTRY
<u>Residential – Villas</u>		
MRL 800kg 8stops	Eduard Mörike 5	Germany
MRL Homelift	Brucke Esens, private house	Germany
MRL 630kg 4stops	Maddox Street, London	UK
MRL 630kg 6stops	Sydenham, Exeter	UK
MRL 800kg 5 stops	Ginardi Mosman Appartments Sydney	Australia
HAI 800kg 4stops	Jastrzebie SP17	Poland
MRL 1600kg 5stops	Olsztyn	Poland
MRL 1275kg 4stops	Bauviv, Debrecen	Hungary
MRL 450kg 3stops	Balaton, Budapest	Hungary
MRL 2000kg 6stops	Fehervari, Miskolc	Hungary
6 Passenger lifts	Complex building, Lazaret	Montenegro
3xMRL 630kg 2 stops	Horizon	UAE
MR 320kg 5 stops	Sfax Tunis	Tunisia
MRL 630kg 3 stops	Villa Adamam	Saudi Arabia

## SUPPORT OPERATIONS

24/7 AFTER SALES SUPPORT



### After Sales

We are there to support you 24/7, in immediate real time, with high-qualified people.







## CONTACT US



Thessaloniki Manufacturing Unit

18th km. Thessaloniki - Polygyros

P.O.B.: 60 102, P.C. 57001

Tel.: +30 2310 463 212, +30 2310 463 811

[www.wyltor.com](http://www.wyltor.com)

---

### Stay Connected

@slidefactory 

@slidefactory 

/facebook.com 

A person is walking through a doorway in a hallway. The wall is made of dark, veined marble. To the right of the doorway is a closed elevator with a metallic finish. Above the elevator is a small sign with a camera icon. To the left of the doorway is a control panel with a digital display showing the number 7 and a keypad with numbers 1 through 9 and 0. Above the doorway is a sign with the letter B. Above the elevator is a sign with the letter C. The person is wearing a dark jacket and jeans, and is walking towards the camera.

**THANK YOU**  
See You Soon!